



## COPPER PATCH CORD CAT.6A U/UTP LSZH 24AWG

### DESCRIPTION

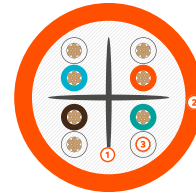
Flexible, for effective management of network connections. It meets and exceeds international standards for Cat 6A , Class EA, 500MHz, 10G. Available in 8 different colours and 15 different standard measures.

### APPLICABLE STANDARDS

- ISO/IEC 11801-1; • EN 50173:2011; • IEC 60603-7; • IEC 60754-2;
- PoE IEEE 802.3af/at and bt Type 3 and 4 (4PPoE); • ANSI/TIA 568.D;
- ROHS; • IEC 61156-5; • IEC 60332-1-2; • IEC 61034-2.



Available in the following colors:



- ① Separator
- ② Jacket
- ③ Conductor



### APPLICATIONS

- Ethernet 10BASE-T, 100BASE-T, 1000BASE-T, 10GBASE-T; •Token ring 4/16; • Digital video and broadband/baseband analog video;
- Voice over Internet Protocol (VoIP).

### MATERIALS

Plug housing	UL 94V2 Polyester
Conector	8P8C Unshielded Male Type
Inner Conductor Diameter (AWG)	24
Jacket	LSZH
Outer Diameter (mm)	6,0 ± 0,2
Mating cycles/durability	750 times

### ELECTRICAL CHARACTERISTICS (20°C)

Contact Resistance (mΩ)	< 20
Resistance Unbalance (%)	3
Dielectric Strength (V DC)	1000
Insulation Resistance (mΩ)	> 100

### INSTALLATION

Temperature Range (Operation) (°C)	-20-60
Temperature Range (Installation) (°C)	0-50
Bending radius	8 x Cable O.D.

This document is authored and owned by barpa. It is forbidden to reproduce in whole or in part without mentioning its authorship, as well as modification of its content or context. All specifications are subject to change without notice. The pictures/drawings are merely illustrative.

More information: [info@barpa.eu](mailto:info@barpa.eu) or in [www.barpa.eu](http://www.barpa.eu)

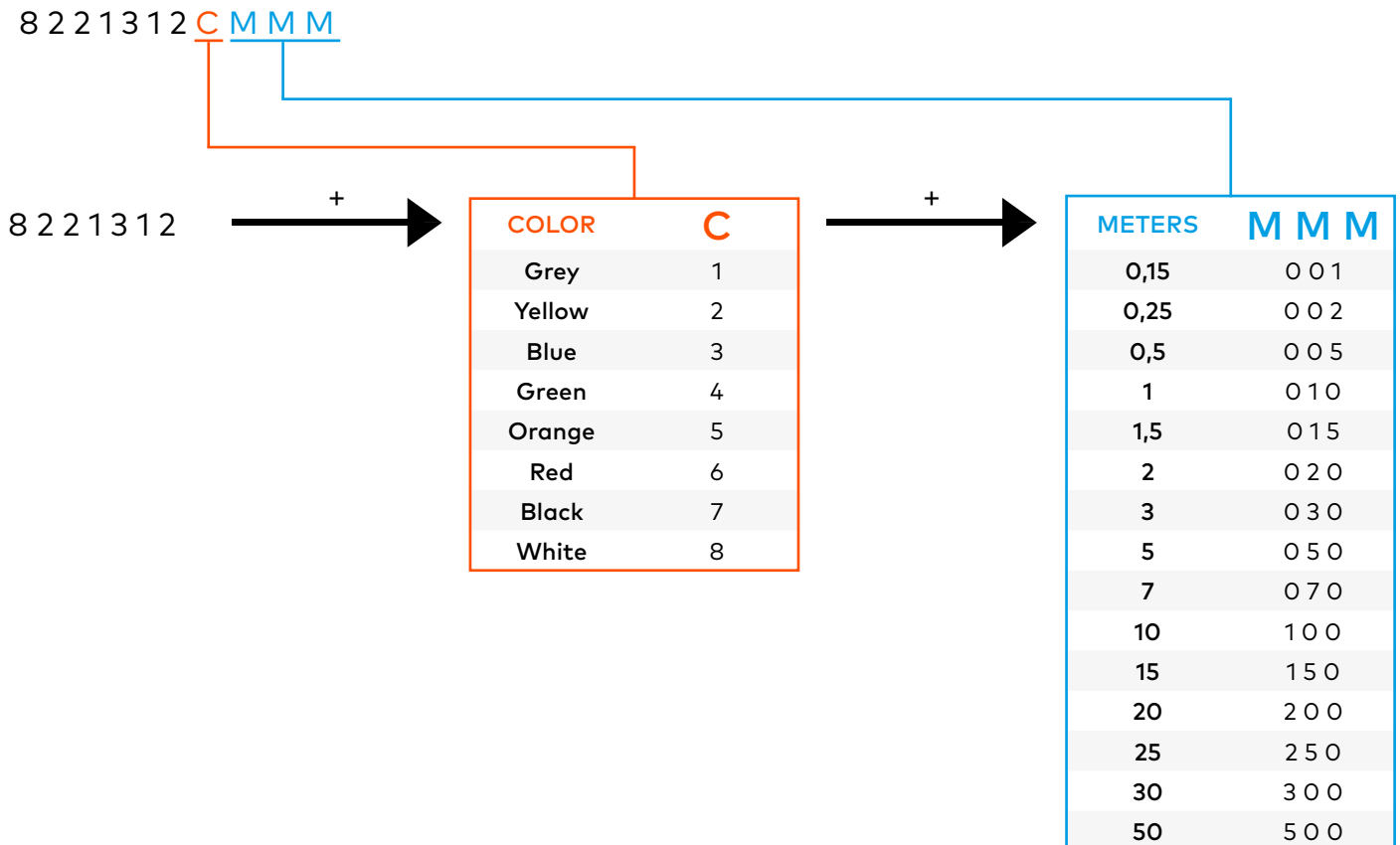
datasheet n° b31\_3 | date: 10/24

approved by: Ana Barbosa

## TECHNICAL PERFORMANCE

Frequency (MHz)	Next Limit (min. Typical)	PS Next Limit (min. Typical)	ACR Limit (min. Typical)	RL Limit (min. Typical)
1	65,0	62,0	62,0	19,0
4	63,0	60,0	58,9	19,0
8	58,2	55,2	52,4	19,0
10	56,6	53,6	50,1	19,0
16	53,2	50,2	45,0	18,0
20	51,6	48,6	42,5	17,5
25	50,0	47,0	39,8	17,0
31,25	48,4	45,4	36,9	16,5
62,5	43,4	40,4	27,0	14,0
100	39,9	36,9	19,0	12,0
200	34,8	31,8	4,7	9,0
250	33,1	30,1	-0,8	8,0
350	30,3	27,3	-10,3	6,6
500	26,1	23,1	-23,2	6,0

## PART NUMBER BREAKDOWN - ORDER INFORMATION



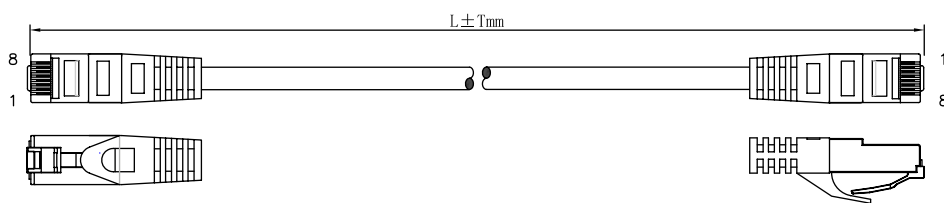
- GREY (RAL7035); • YELLOW (RAL1018); • BLUE (RAL5017); • GREEN (RAL6016); • ORANGE (RAL2008);
- RED (RAL3028); • BLACK (RAL9005).

**NOTE: Non standards colours, lengths & configurations available on request.**

## PACKAGING INFORMATION

Meters	Type	Quantity (un)	Size (mm)	Gross Weight (kg)
0,15	Carton	240	490x300x280	6,30
0,25		220		7,00
0,5		200		6,68
1		150		8,10
1,5		120		9,90
2		80		8,70
3		80		10,70
5		60		12,70
7		40		11,80
10		30		12,50
15		22		13,50
20		20		15,90
25		18		17,70
30		16		18,80
50		10		19,40

## TECHNICAL DRAWING



LENGTH	TOLERANCE
$\leq 1000$ mm	$\pm 30$ mm
$1000 < L \leq 5000$ mm	$\pm 50$ mm
$5000 < L \leq 10000$ mm	$\pm 100$ mm
$10000 < L \leq 20000$ mm	$\pm 200$ mm
$20000$ mm $< L$	$\pm 500$ mm

## PACKAGING



As part of our goal to achieve quality excellence, our barpa System Warranty can give you 25 years products and solution assurance of compliance with the industry performance standard comparing with the class installed. This warranty applies to network infrastructure installations that was made by an approved barpa partner using an barpa solution (end-to-end). For more informations go to our website.